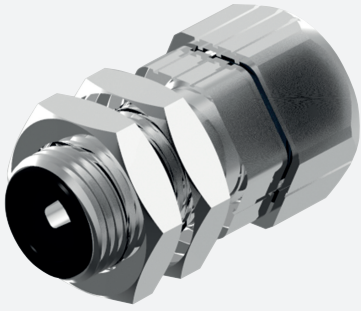


# Mounting aid

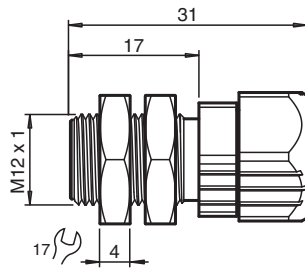
## MH-EXG-08



- Clamp for threaded pipe
- Suitable for all M8 sensors, including reduction factor 1
- Simple and quick exchange without readjustment
- 2 panel nuts included
- Free of paint wetting interfering substances
- Significantly reduced influence on the switching distance

Quick mounting bracket with dead stop

## Dimensions



## Technical Data

<b>Ambient conditions</b>		
Ambient temperature		-40 ... 90 °C (-40 ... 194 °F)
<b>Mechanical specifications</b>		
Length	L	31 mm thread length of sensor min. 31 mm
Diameter		sensor min. 7.8 mm sensor max. 8 mm
Material		brass, nickel-plated free of paint wetting interfering substances
Screwed connection		SW = 17 mm
Dimensions		M12 x 1 external thread
Tightening torque		12 Nm
<b>General information</b>		
Note		Attention: Sensor shape dependent, it will be fixed up to 0.7 mm in back-flush position.

Release date: 2022-12-19 Date of issue: 2022-12-19 Filename: 70112556\_eng.pdf

Refer to "General Notes Relating to Pepperl+Fuchs Product Information".

Pepperl+Fuchs Group  
www.pepperl-fuchs.com

USA: +1 330 486 0001  
fa-info@us.pepperl-fuchs.com

Germany: +49 621 776 1111  
fa-info@de.pepperl-fuchs.com

Singapore: +65 6779 9091  
fa-info@sg.pepperl-fuchs.com

 PEPPERL+FUCHS

## Mounting

